

# Liontrust GF European Strategic Equity Fund

This document provides you with key investor information about this Fund. It is not marketing material. The information is required by law to help you understand the nature and the risks of investing in this Fund. You are advised to read it so you can make an informed decision about whether to invest.

Liontrust GF European Strategic Equity Fund is a sub-fund of Liontrust Global Funds plc. The Management Company is Bridge Fund Management Limited. This document is based upon the C3 Hedged Acc GBP (ISIN: IE00BLG2W221)

## Objective and Investment Policy

- To achieve a positive absolute return over the long term for investors through a portfolio of long, synthetic long and synthetic short investments primarily in European equities and equity related derivatives.
- There is no guarantee that an absolute return will be generated over any time period.
- The Fund invests globally, although it is intended to invest primarily in Developed European equities. The Fund may also invest in other eligible asset classes as detailed within the prospectus.
- The Fund is considered to be actively managed in reference to the benchmark(s) in the performance table by virtue of the fact that it uses the benchmark(s) for performance comparison purposes. The benchmark(s) are not used to define the portfolio composition of the Fund and the Fund may be wholly invested in securities which are not constituents of the benchmark.
- The Fund may not be appropriate for investors who plan to withdraw their money within 5 years.
- The charges you pay are used to pay the costs of running the Fund, including the costs of marketing and distributing it. These charges reduce the potential growth of your investment.
- You may buy or sell units on a daily basis (but not weekends or Bank Holidays). Orders must be received by 11:59am (Irish time) for execution at 12:00 midnight valuation point on the same day.
- The Fund will invest in derivatives but it is not intended that their use will materially affect volatility. Derivatives are used to protect against currencies, credit and interest rate moves or for investment purposes. The use of derivatives may create leverage or gearing resulting in potentially

greater volatility or fluctuations in the net asset value of the Fund. A relatively small movement in the value of a derivative's underlying investment may have a larger impact, positive or negative, on the value of a fund than if the underlying investment was held instead.

- This is a Hedged Share Class. The Hedged share classes use forward foreign exchange contracts to protect returns in the base currency of the Fund.
- The fund managers focus on the historic cash flows generated and invested by companies to support their forecast profits growth. As forecasts are often unreliable, the scale of cash invested to support forecasts is key.
- The fund managers seek to own companies that generate significantly more cash than they need to sustain their planned growth yet are lowly valued by investors on that measure and are run by managers committed to an intelligent use of capital.
- They sell short stocks that their research indicates are expensive, are struggling to generate any cash and are run by management investing heavily for future growth. To identify companies' annual cash flow, balance sheet development and valuation efficiently across all equity markets the fund managers have developed a simple screen as a starting point for further qualitative analysis. The investment screen consists of two cash flow ratios that are combined equally to highlight the process characteristics that they seek.
- The two cash flow measures are:
  - Cash flow relative to operating assets
  - Cash flow relative to market value

## Risk and Reward Profile



- This Synthetic Risk and Reward Indicator (SRRRI) is based on historical data and may not be relied upon to gauge the future risk profile of the Fund.
- The SRRRI shown is not guaranteed to remain the same and may shift over time.
- The lowest category (1) does not mean 'risk free'.
- The Fund is categorised 6 primarily for its exposure to Developed European equities along with a number of derivative positions.
- The Fund's risk and reward category has been calculated using the methodology approved by the Financial Conduct Authority. It is based upon the rate by which the Fund or a representative fund or index's value has moved up and down in the past.
- For full details of the Fund's risks, please see the prospectus which may be obtained from Liontrust (address below) or online at [www.liontrust.co.uk](http://www.liontrust.co.uk).
- The Fund's volatility limits are calculated using the Value at Risk (VaR) methodology. In high interest rate environments the Fund's implied volatility limits may rise resulting in a higher risk indicator score. The higher score does not necessarily mean the Fund is more risky and is potentially a result of overall market conditions.

- The SRRRI may not fully take into account the following risks:
  - that a company may fail thus reducing its value within the Fund;
  - overseas investments may carry a higher currency risk. They are valued by reference to their local currency which may move up or down when compared to the currency of the Fund.
- **Credit Counterparty Risk:** the Fund uses derivative instruments that may result in higher cash levels. Outside of normal conditions, the Fund may choose to hold higher levels of cash. Cash may be deposited with several credit counterparties (e.g. international banks) or in shortdated bonds. A credit risk arises should one or more of these counterparties be unable to return the deposited cash.
- **Liquidity Risk:** the Fund may encounter liquidity constraints from time to time. The spread between the price you buy and sell shares will reflect the less liquid nature of the underlying holdings.
- **ESG Risk:** there may be limitations to the availability, completeness or accuracy of ESG information from third-party providers, or inconsistencies in the consideration of ESG factors across different third party data providers, given the evolving nature of ESG.

## Charges

### One-off charges taken before or after you invest

Entry Charge	None
Exit Charge	None

The entry and exit charges shown are maximum figures. In some cases you might pay less – you can find this out from your financial adviser or fund platform if you are not using a financial adviser.

### Charges taken from the Fund over the year

Ongoing Charges	1.21%
-----------------	-------

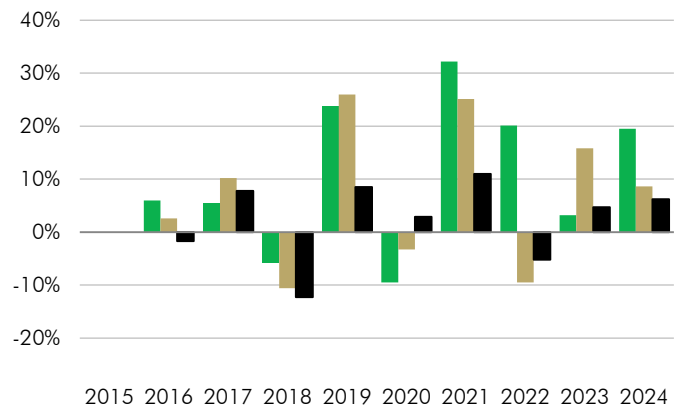
### Charges taken from the Fund under certain specific circumstances

Performance Fee	Performance Fee Rate: 20.00% of the outperformance subject to a 4% hurdle rate per calendar year.
-----------------	---

- The charges you pay are used to pay the costs of running the Fund, including the costs of marketing and distributing it. They reduce the potential growth of your investment.
- The entry and exit charges shown are maximum figures. In some cases you might pay less – you can find this out from your financial adviser or fund platform if you are not using a financial adviser.
- The ongoing charges figure is based on expenses as at 31 December 2024. This figure may vary from year to year. It excludes:
  - portfolio transaction costs, except in the case of an entry/exit charge paid by the UCITS when buying or selling units/shares in another collective investment undertaking.
- For more information about charges and what is included in each charge, please see the Fund's prospectus, which is available electronically at [www.liontrust.co.uk](http://www.liontrust.co.uk), or visit the costs and charges page on our website at [www.liontrust.co.uk/costs-and-charges](http://www.liontrust.co.uk/costs-and-charges).
- A performance fee is calculated and accrued at each valuation point and crystallises on 31 December each year or upon redemption. No Performance Fee will be payable with respect to a Fund class in any Performance Period unless such class has recovered any accumulated underperformance for previous Performance Periods.
- Investors in share classes with a performance fee will pay a variable performance fee amount that is based on the performance of the underlying share class, which is likely to result in different total fees being charged each year and, during periods of outperformance, higher total fees than that of a share class with no performance fee. A performance fee may be payable in case the share class has outperformed its benchmark but had a negative performance.

## Past Performance

- Past performance does not predict future returns.
- It has been calculated on the basis that any distributable income of the Fund has been reinvested. The past performance shown in the chart takes into account all charges except entry and exit charges.
- The Fund launch date is 15 February 2012.
- The C3 Hedged Acc GBP launch date is 14 May 2015.
- The base currency of the Fund is EUR.



	2015	2016	2017	2018	2019	2020	2021	2022	2023	2024
■ Liontrust GF European Strategic Equity Fund C3 Hedged Acc GBP	6.0%	5.4%	-5.8%	23.8%	-9.5%	32.2%	20.1%	3.2%	19.5%	
■ MSCI Europe	2.6%	10.2%	-10.6%	26.0%	-3.3%	25.1%	-9.5%	15.8%	8.6%	
■ HFRX Equity Hedge EUR	-1.7%	7.8%	-12.3%	8.5%	2.9%	11.0%	-5.2%	4.7%	6.2%	

## Practical Information

**Authorisation:** This Fund is a sub-fund of Liontrust Global Funds plc, an open-ended umbrella type investment company with variable capital and segregated liability between sub-funds. Bridge Fund Management Limited is authorised in Ireland and regulated by the Central Bank of Ireland. The Fund is also recognised in various EU member States and the UK. Further details regarding the list of countries where this fund is registered for sale can be requested from Liontrust Investment Partners LLP, 2 Savoy Court, London, WC2R 0EZ.

**Depository:** Custody of the Fund's assets are held by The Bank of New York Mellon SA/NV, Dublin Branch

**Investment adviser:** Liontrust Investment Partners LLP.

**Further information:** Copies of the prospectus and the latest annual and half-yearly reports are available, without charge, from Liontrust Global Funds plc. They are also available electronically at [www.liontrust.co.uk](http://www.liontrust.co.uk)

**Taxation:** Irish tax legislation may have an impact upon your own personal tax position.

**Fund prices and other information:** The Fund's last published price is available from Liontrust Investment Partners LLP at [www.liontrust.co.uk](http://www.liontrust.co.uk) or by writing to us at 2 Savoy Court, London, WC2R 0EZ, or by telephoning 020 7412 1777 during business hours (9.00am - 5.30pm).

**Rights to switch between sub-funds:** Investors may switch between other sub-funds of the Liontrust Global Funds plc without charge. Details may be found in the prospectus.

**Remuneration:** Details of the up-to-date remuneration policy of the Management Company are published online at <https://bridgefundservices.com/disclosures/> this includes the description of how remuneration and benefits are awarded for employees and information on the remuneration committee. The Management Company provides a paper copy free of charge upon request.