

Asia Total Return Fund

Class I6 (CHF Hedged) Acc

The Fund

Investment objective

The Asia Total Return Fund aims to maximize total returns from a combination of capital appreciation and income generation.

Policy

The Fund invests at least 70% of its net assets in a diversified portfolio of fixed income securities, issued by governments, agencies, supra-nationals and corporates in Asia. It may invest up to 40% of net assets in below investment grade debt securities. It may use financial derivative instruments and may also invest up to 20% of its net assets in debt instruments with loss-absorption features.

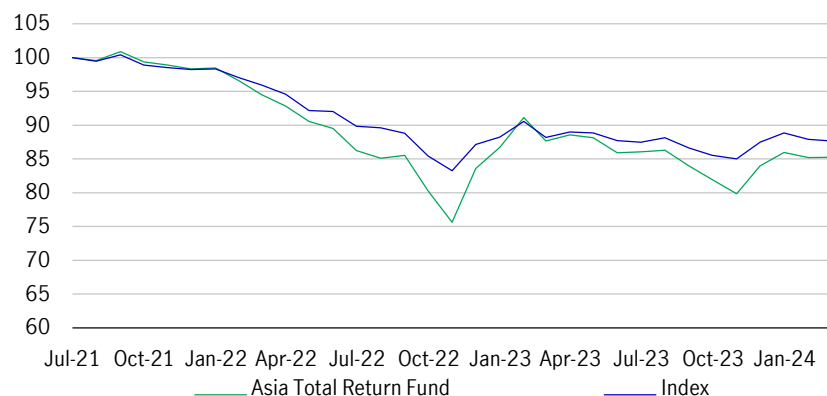
Philosophy

We believe that consistently attractive risk adjusted returns can be generated in Asian fixed income markets by seeking to exploit interest rate, credit and currency opportunities within a risk-controlled investment approach. We also believe leveraging on our extensive on-the-ground proprietary research and ESG capabilities provides us with an informational advantage over our peers.

Share class performance since inception

Cumulative performance (%)

Total return in CHF net of fees, as of 29 February 2024 (rebased to 100)



Average annual total returns (%)

	1 mth	3 mths	YTD	1 yr	3 yrs p.a.	5 yrs p.a.	10 yrs p.a.	SI p.a.
Fund	0.07	1.51	-0.79	-2.73	-	-	-	-5.89
Index	-0.27	0.21	-1.30	-0.60	-	-	-	-4.88

Calendar year returns (%)

	2023	2022	2021	2020	2019	2018	2017	2016	2015	2014
Fund	-0.89	-11.96	-1.51	-	-	-	-	-	-	-
Index	0.67	-10.28	-1.65	-	-	-	-	-	-	-

Note: Performance in the first year may be partial, please see the key facts for the inception date of the share class.

Key facts

Investment team

	Began career
Endre Pedersen (Lead)	1999
Chris Lam, CFA	2005
Eric Lo, CFA	2008
Murray Collis	1996

Investment strategy

Inception date	October 2009
Strategy AUM (Dec.31, 2023) (CHFbn)	0.1

Fund information

Inception date	25 September 2009
Benchmark index	50% JP Morgan Emerging Local Markets Index Plus (Asia) + 50% JP Morgan Asia Credit Index (CHF Hedged)
Fund size (CHFm)	77.0
Base currency	USD
Domicile	Luxembourg
Umbrella	Manulife Global Fund
Dealing deadline	1pm Luxembourg time (daily)

Share class information

Inception date	15 July 2021
ISIN	LU2225681373
Currency	CHF
Bloomberg ticker	MLARI6C LX
Minimum investment	CHF 1 Million
Management fee (%)	0.55
Ongoing charges figure (%) (total expenses p.a.)	0.88

Note: The ongoing charges figure is based on an estimate of the charges of the Fund's operations and may vary over time. It includes charges such as the Fund's annual management charge, registration fee and custody fees. More information about charges can be found in the Fund's prospectus and KIIDS. These charges will have an impact on any investment.

Portfolio parameters

Duration	Absolute Fund's range: from 1 year to 6 years
Credit	Max 25% in non-investment grade corporate bonds
Currency	Min 30% US dollar net exposure Max 70% Asia open FX net exposure

Past performance is not indicative of future results. The Fund's investment return and principal value will change with market conditions and you may have a gain or loss when you sell your shares. Changes in exchange rates may have an adverse effect. Performance data source: Manulife Investment Management, based upon Class I6 Acc hedged in CHF, includes fees and charges. Returns greater than one year are annualised. Current performance may differ from figures shown.

FOR PROFESSIONAL AND/OR QUALIFIED INVESTORS ONLY. NOT FOR DISTRIBUTION TO THE PUBLIC.

Portfolio

Fund characteristics	Fund	Index	Credit rating allocation (%)	Fund	Index
Average rating	Baa1/Baa2	A2/A3	AAA	1.0	6.9
Average coupon (%)	4.8	2.0	AA	21.0	20.8
Yield to maturity (%)	7.4	5.8	A	5.4	29.0
Current yield (%)	5.6	4.5	BBB	54.8	36.3
Currency (USD net exposure) (%)	46.3	50.0	BB	11.9	3.7
Effective duration (years)	5.2	2.2	B	2.3	0.8
Number of holdings	101	1,562	CCC or below	0.9	0.9
			NR	2.6	1.6
			Cash and derivatives	0.1	–
Geographical allocation (%)	Fund	Index	Sector allocation (%)	Fund	Index
Australia	3.3	–	Treasury	58.2	50.0
China	13.4	26.3	Corporate - IG	18.7	15.3
Hong Kong	4.2	4.7	Corporate - HY	14.2	3.5
India	20.2	10.8	Government-Related	7.3	30.0
Indonesia	19.3	9.4	Corporate - NR	1.6	1.3
Macau	2.1	0.9	Cash and derivatives	0.1	–
Malaysia	2.0	5.5			
Philippines	5.3	4.2			
S.Korea	13.6	14.9			
Singapore	0.7	8.0			
Supranational	1.0	–			
Thailand	6.8	4.9			
Others	8.2	10.5			
Cash and derivatives	0.1	–			

To find out more visit www.manulifeim.com/institutional

Investments underlying this financial product do not promote environmental or social characteristics nor have sustainable investment as an objective, as defined in the EU's Sustainable Finance Disclosure Regulation.

Asia Total Return is a sub-fund of Manulife Global Fund which is authorised in Luxembourg and regulated by the Commission de Surveillance du Secteur Financier (CSSF). The assets of this Sub-Fund are segregated from other sub-funds in Manulife Global Fund.

In the UK: Issued and approved by Manulife Investment Management (Europe) Limited. Registered in England No.02831891. Registered Office: One London Wall, London EC2Y 5EA. Authorised and regulated by the Financial Conduct Authority. **In the EEA:** Issued and approved by Manulife Investment Management (Ireland) Limited. Registered office located Second Floor, 5 Earlsfort Terrace, Dublin 2, D02 CK83, Ireland. Authorised and regulated by the Central Bank of Ireland.

The Fund is not registered in every jurisdiction and this material and any related materials may not be distributed or published in any jurisdiction where it would be contrary to local law or regulation. See the below website where the fund is registered.

This is a marketing communication therefore any decision to invest in this Fund should be based upon a review of the terms of the prospectus, including the relevant supplement, the relevant KIID and the latest annual and semi-annual accounts which are available in English at www.manulifeim.com/institutional.

A Summary of Investor Rights is available in English under the Additional Documents section of this website. For EU Investors: Please note, a fund may be withdrawn from marketing in your jurisdiction upon notice from the Management Company in accordance with applicable regulations.

The Representative in Switzerland is FundRock Switzerland SA (formerly known as ARM Swiss Representatives SA), Route de Cité-Ouest 2, 1196 Gland and the Paying Agent is Banque Cantonale de Genève, Quai de l'Île 17, CH-1204 Geneva. The prospectus, the KIID, the instrument of incorporation, as well as the semiannual and annual reports can be obtained upon request and free of charge from the Representative in Switzerland.

Portfolio characteristics including holdings, sector weightings and market capitalization are subject to change at any time. Current and future holdings are subject to risk. Ongoing market volatility can dramatically impact short term returns. All material is compiled from sources believed to be reliable and correct, but accuracy cannot be guaranteed.

Risks

All investments involve risk, including the possible loss of principal. There is no guarantee investment objectives will be met. Past performance is not indicative of future results. Investment return and principal value will fluctuate so shares, when redeemed, may be worth more or less than their original cost.

Investments in Debt Instruments with Loss-absorption Features (including Contingent Convertible Debt Securities): debt instruments with loss-absorption features present more significant risks relative to traditional debt securities particularly given that instruments of this type can be written down or converted to equity as the result of the triggering of predetermined criteria relating to solvency and/or regulatory required capital levels. Such trigger events can result in a partial or total reduction in the value of the associated securities.

Investments via the Bond Connect: the Fund's investments in bonds through the Bond Connect will be subject to a number of additional risks and restrictions.

Volatility and Liquidity Risk: during certain times, the Fund's investments may become difficult to sell for full value or at all, which could affect performance and could result in delays when you sell your shares.

Sovereign Debt Risk: the Fund's investment in securities issued or guaranteed by governments may be exposed to political, social and economic risks.

Mainland China Investment Risk: investing in the securities markets in Mainland China is subject to the risks of investing in emerging markets generally as well as to specific risks relating to the Mainland China market.

People's Republic of China Tax Risk: the Fund may be exposed to risks associated with changes in current Chinese tax laws, regulations and practice, which may have retrospective effect.

Use of Financial Derivatives Instruments (FDIs): the Fund may use FDIs to manage risk and manage the Fund more effectively. The use of derivatives exposes the Fund to additional risks, including volatility risk, management risk, market risk, credit risk and liquidity risk.

Renminbi Currency and Conversion Risks: the Renminbi is not currently a freely convertible currency and is subject to foreign exchange control imposed by the PRC government.

Emerging Markets Risk: the investment of the Fund may be exposed to higher risks than in developed economies or markets.

For a more detailed explanation of risks, please refer to the "General Risk Factors" section and "Appendix I" of the Prospectus.